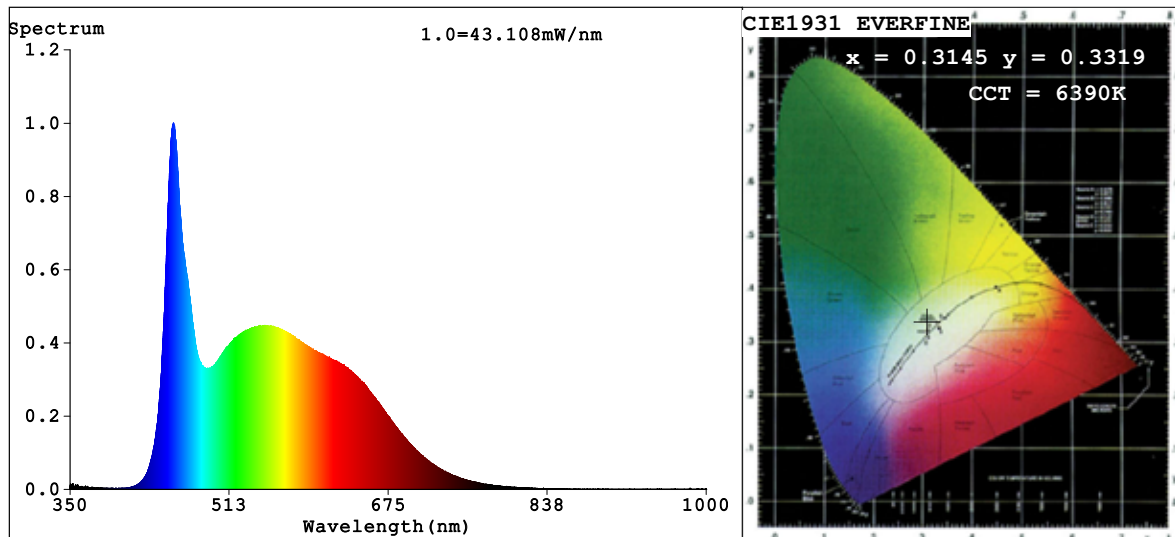


Spectrum Test Report



Color Parameters:

Chromaticity Coordinate: $x=0.3145$ $y=0.3319$ $u'=0.1980$ $v'=0.4701$
 CCT=6390K (Duv=0.0038) Dominant WL: $\lambda_d = 490.7\text{nm}$ Purity=6.5%
 Ratio: R=14.8% G=78.2% B=7.0%; Peak WL: $\lambda_p = 455.7\text{nm}$ FWHM=27.0nm
 Render Index: Ra=91.4 CRI=88.3 TM30: Rf=87 Rg=96
 R1 =92 R2 =98 R3 =97 R4 =86 R5 =89 R6 =93 R7 =91
 R8 =86 R9 =68 R10=93 R11=87 R12=63 R13=95 R14=99 R15=90

Photo Parameters:

Flux = 1286 lm Eff. : 77.30 lm/W Fe = 4.603 W

Electrical parameters:

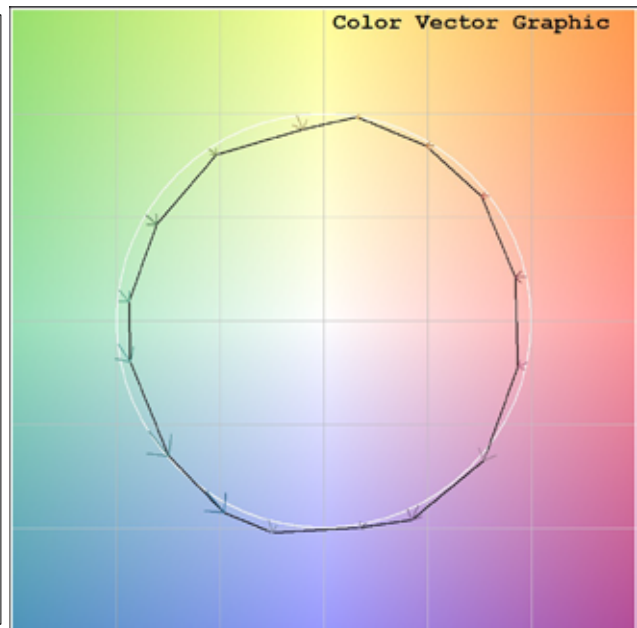
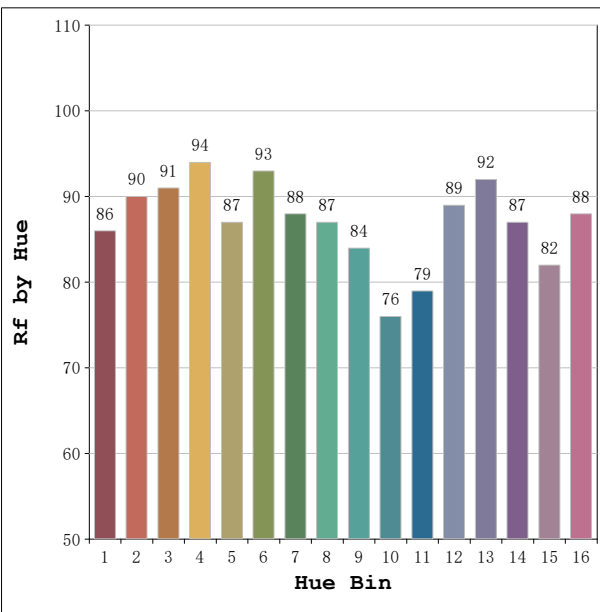
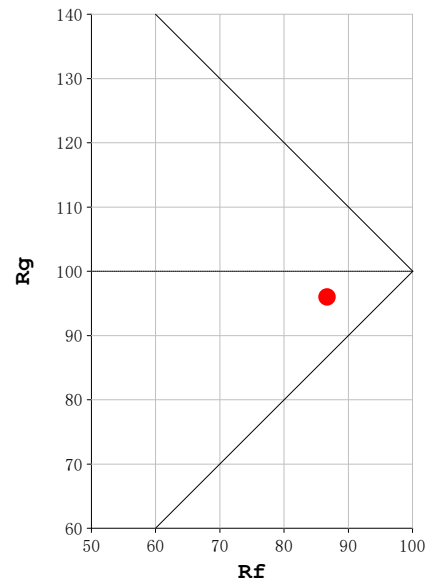
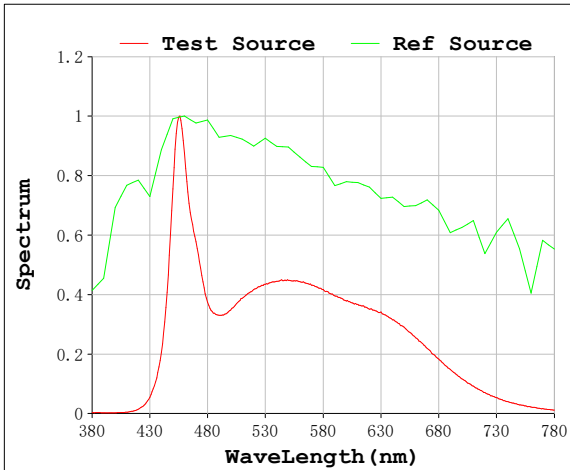
V = 11.998 V I = 1.387 A P = 16.64 W PF = 1.000

Status: Integral T = 453 ms Ip = 33446 (51%)

Model: Ecoled Barcelona 6500
 Tester: Sergio Carneros
 Temperature: 21Deg
 Manufacturer: Luz Negra S.L

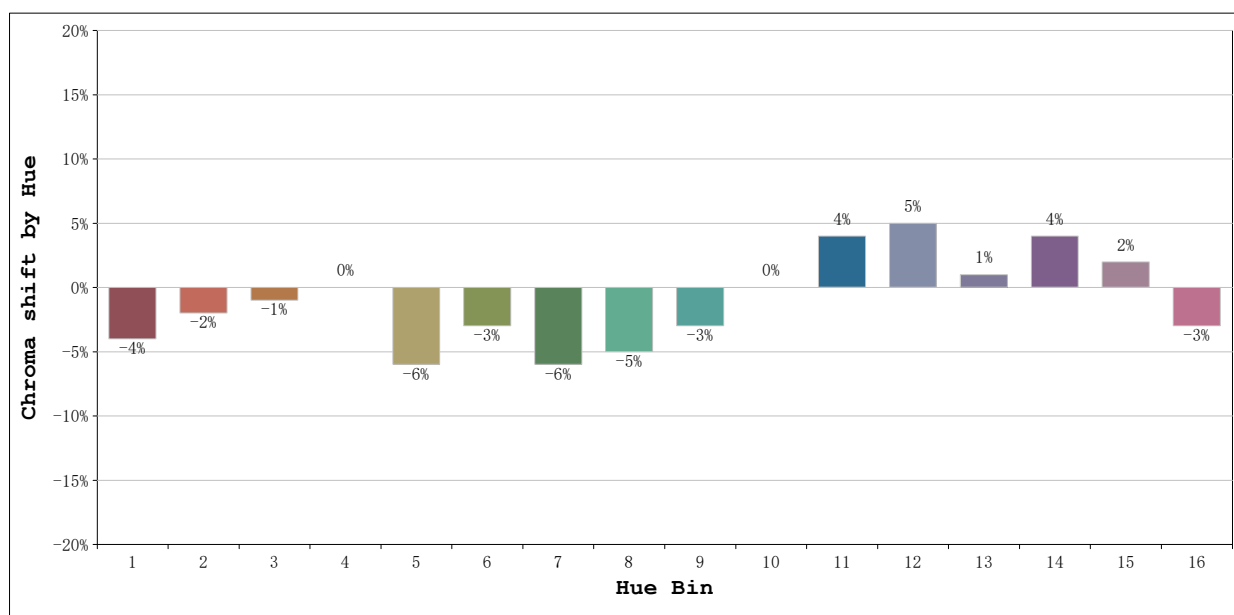
Number: 32.001
 Date: 01-06-2026
 Humidity: 58%
 Remarks: 100cm de tira flexible

Rf: 87 **CCT: 6390 K** **u': 0.1980**
Rg: 96 **Duv: 0.0038** **v': 0.4701**



Model:Ecoled Barcelona 6500
Tester:Sergio Carneros
Temperature:21Deg
Manufacturer:Luz Negra S.L

Number:32.001
Date:01-06-2026
Humidity:58%
Remarks:100cm de tira flexible



			Graphic shift(%)	
Hue Bin	Hue Angle	Rf	Chroma	Hue
1	0.0° - 22.5°	86	-4	1
2	22.5° - 45.0°	90	-2	2
3	45.0° - 67.5°	91	-1	3
4	67.5° - 90.0°	94	0	2
5	90.0° - 112.5°	87	-6	0
6	112.5° - 135.0°	93	-3	0
7	135.0° - 157.5°	88	-6	1
8	157.5° - 180.0°	87	-5	4
9	180.0° - 202.5°	84	-3	9
10	202.5° - 225.0°	76	0	15
11	225.0° - 247.5°	79	4	13
12	247.5° - 270.0°	89	5	3
13	270.0° - 292.5°	92	1	-3
14	292.5° - 315.0°	87	4	-6
15	315.0° - 337.5°	82	2	-8
16	337.5° - 360.0°	88	-3	-2

Model:Ecoled Barcelona 6500
Tester:Sergio Carneros
Temperature:21Deg
Manufacturer:Luz Negra S.L

Number:32.001
Date:01-06-2026
Humidity:58%
Remarks:100cm de tira flexible